

ARTERY®



LADY Q
USER MANUAL

Shenzhen Artery Technology Co.,Ltd
© All copyrights reserved

1.Safety & Precautions

1.1 Safety Precautions

The product does not come with special charger. You can choose general 5V lithium battery charger compliance with safety regulations. The maximum charging current is 900mA.

The atomizer will generate heat while using. Do not touch the atomizer surface, which may cause burns. Part of the Atomizer body is made of glass, it may crack due to falling into ground. Please be careful handling.

1.2 Security Warning

Please read these precautions carefully before using this product, in order to ensure safety and correct usage of the product

Please read the following brief description carefully , and follow these rules to avoid danger or illegality.



Blasting
Zone
safety

Do not use device where blasting is in progress. Follow any regulations and rules strictly.



Gas Station
Security

Do not use device at Petrol stations. Don't use near fuel or chemicals. Do not dispose your battery or mobile in fire.



High
Temperature
Caution

Use only in normal position. Do not expose your Box to extremely high temperatures above +60 °C (+140 °F) . Do not use anything static to clean your BOX.



Qualified
Service

Only qualified personnel may install or repair this product.



Batteries,
Chargers,
and other
accessories

Use only batteries, chargers, and other accessories approved by Artery for use with this device. Third-party chargers that comply with the IEC/EN 62684 standard, and that can connect to your device micro USB connector, may be compatible. Do not connect incompatible products.



Keep Your
Device Dry

Your device is not water-resistant. Keep it dry.



Glass Parts

The tank of the kit is made of glass. This glass can break if the device is dropped on a hard surface or receives a substantial impact. If the glass breaks, do not touch the glass parts of the device or attempt to remove the broken glass from the device. Stop using the device until the glass is replaced by qualified service personnel

Driving Safety

Try not to use the device when driving. Please make it fixed or put it into box or bag. Do not put it on the passenger seat or any place it might fall during brake.

Fly safety

Turn off the device when take airplane.

Storage Environment and maintenance

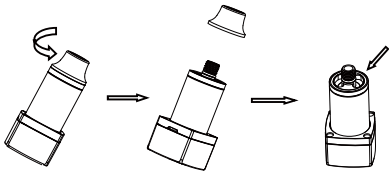
Do not place your device in extreme high-temperature environments (over 60 degrees), for example, Place under the high temperature sunlight directly.

Warning: The batteries (battery pack or batteries installed) shall not be exposed to excessive heat such as sunshine, fire or the like.

2.Preparation before using

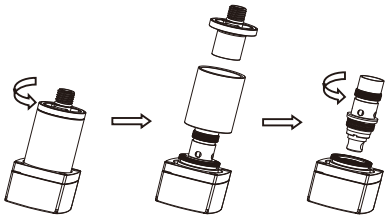
2.1 How to Fill

Unscrew the drip tip counterclockwise and fill the e- liquid as the arrow shows.



2.2 how to install and take out the coil head.

Unscrew the atomizer cover anticlockwise. Draw out cover and glass parts and spin out the coil anticlockwise.



2.3 how to charge

Lady Q uses rechargeable polymer lithium ion battery, and it doesn't come with dedicated charger. Please use qualified general 5V cellphone charger.

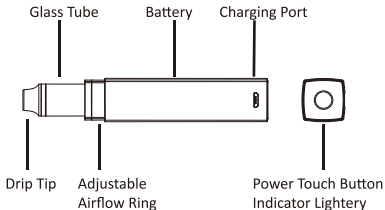
Attention 1: the performance of battery life varies from the resistance of coil .

Attention 2: using unqualified cellphone charger will reduce the battery life, even cause harm to personal security.

- 1、 Insert the charger head into power socket , then insert the micro USB end into product charging port
- 2、 Charging status: The bottom red light flashes. When fully charged, the green light flashes 20 times and goes out. Then pull out the charger and charger plug. Caution: Do not use when product is plugged in.
- 3、 During charging, atomizer will not work when button is pressed.

3. Product description

3.1 introduction of Lady Q Kit



4. Product Operations

4.1 Power on/ Power off

Press the bottom touch key for 5 times, the device will be turned on ,also 5 presses to turn off the device.

4.2 Vaping.

Press the power touch button you can start vaping . The device has a 8s cutoff feature which will stop it from firing after 8-seconds.If this happens ,simply release the touch key ,and wait a second before vaping again.

4.3 Battery indicator

When power light is in red, means only 30% battery energy capacity left.

when power light is in yellow, means only 30%-80% battery energy capacity left.

when power light is in green, means more than 80% battery energy capacity left.

4.4 Low-voltage protection

In order to protect the battery, this device sets the low-voltage protection, when the device's red light continuous flash 15 times , indicating that the device is low-voltage and need to be charged.

4.5 Short-circuit protection

Output short circuit, the red light flashes 4 times.

4.6 High Temperature Protection

When temperature is too high for device to perform, the yellow light flashes 6 times, stop working

5. Appendix 1

Common failure diagnosis

Situation	Possible reason and Solution
Mod in abnormal overheat	1.Stop vaping 2.Put it at a cool place until the heat back to normal.
Indicator light is always red in the charge	1.The battery life ends or it is destroyed. 2.Contact customer service for consultation.
Glass tank of atomizer breaks.	1.Be careful Handling glass fragments careful 2. Change to another glass tube.
Power button doesn't work at all when pressed.	1. The device is broken. 2. Contact customer service for consultation.



DANGER



**This product
contains magnetic
component.
Persons with heart
disease or
pacemaker are
prohibited to use.**

THANK YOU!