

USER MANUAL FOR THE Plato



Thank you for purchasing the Aspire Plato. The Plato is a stealth personal vaporizer that fits comfortably in the palm of your hand. Its design conceals the tank, 18650 battery cell, atomizer, and cpu inside of the attractive and ergonomic device. The Plato also features two different atomizer styles. One for mouth to lung and the other for direct to lung. So no matter your preference the Plato has you covered.

The Plato Tank

- Capacity: 4.6 ml with the 0.4ohm coil; 5.6ml with the 1.8ohms coil.
- Pyrex tube.
- Airflow adjustment on the bottom of the device.
- Two 510 drip tips, one is stainless steel and intended for use with the mouth to lung coil system, the other is a Delrin wide bore 510 drip tip intended for use with the Plato's direct to lung subohm coils.



The Plato coils

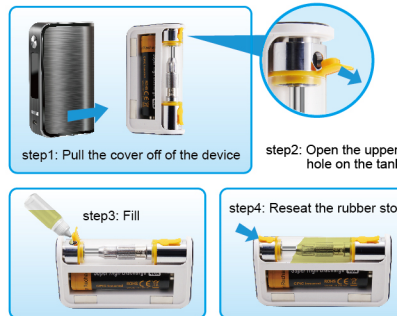
- Kanthal 1.8ohms rated for 10-13 watts for mouth to lung vaping, preinstalled, compatible with our Nautilus BVC replacement atomizer.
- Kanthal Clapton 0.4ohm rated at 40-50 watts for direct to lung vaping.

Installation

- Remove the drip tip.
- Unscrew the hardware beneath the drip tip. (Using the provided key or a coin).
- Remove the atomizer (when a 1.8ohms coil is installed, please unscrew the cartridge's arrestor then unscrew the 1.8ohms coil from the device.)
- Insert the new atomizer (when installing a 1.8ohms coil please make sure to tighten the cartridge's arrestor first, then screw a 1.8ohms coil).
- Tighten it down using the key or a coin, make sure the filling hole is facing the opposite side of the screen.
- Replace the drip tip.
- Make sure there is no extra ejuice left in the tank before changing an atomizer.
- The upper hole also works as an ejuice outlet, if there's ejuice in your tank, please open both the upper hole and lower hole to drain the tank.



Filling



The Plato device

- Voltage range 0.3-9.5V.
- Resistance operational ranges 0.2Ohm to 3.0 Ohms in Bypass, 0.1Ohm to 3.0 Ohms in Regulated, and 0.05 Ohm to 2.0 Ohms in Temperature Control.
- Wattage 1-50 Watts - The Plato calculates voltage in Regulated mode based upon your atomizer's resistance. If the voltage exceeds 9.5 Volts the Plato will limit itself to 9.5 Volts.
- Single 18650 battery.
- Micro USB charging, maximum charge current of 900 mah, the Plato is a 5 Volts output device that does not function as a passthrough, while charging the Plato will indicate this with a flashing battery icon on the display.
- When the Plato has finished charging (4.2V) it will automatically stop charging and the screen will turn off. (If your battery's charge drops below 2.6V replace the cell, as it can no longer be charged.)
- The display will auto rotate for ease of use.

Temperature Control

- Temperature Range: 200 Fahrenheit to 600 Fahrenheit (100 Celsius to 315 Celsius).
- Temperature Control viable with Nickel (Ni200) and Titanium (Ti).

Protective Features

- Stepdown protection – the Plato automatically cuts the wattage down if it detects that the current cell's charge is too weak to deliver the desired wattage. When this cutoff brings the wattage to 20 watts less the battery icon will flash and the display will read "LOW BATTERY".
- Automatic cutoff – After 12 seconds of continuous use the Plato will stop functioning the display will show "Over 12s" for 3 seconds and enter standby mode.
- High temperature protection – if the Plato detects that it is over 167 degrees Fahrenheit/75 degrees Celsius the device will cease functioning and the display will indicate "TOO HOT".
- Short circuit protection - If the device detects a short circuit the device will enter short circuit protection mode and it will not fire, instead the display will read "SHORT CIRCUIT" for 3 seconds before entering standby mode. To correct the issue remove your atomizer and check for shorts.
- Low resistance protection - When the device detects a resistance below 0.1 ohm the display will read "LOW RES" for 3 seconds before entering main interface. The device will no longer fire until the atomizer is replaced with one that is within the device's operating range.

Instructions

- Upon turning the device on the Aspire logo will be displayed for 6 seconds. Afterwards you will select either Wattage or Temperature Control. If you select Wattage you will be prompted to choose between Regulated and Bypass mode. After confirming you can set your wattage in Regulated mode or begin using the Plato immediately in Bypass mode.
- If you selected Temperature Control then you will be prompted to select either NI (Nickel 200) or TI (Titanium) then asked if your atomizer is at room temperature. If so then select yes, otherwise select no, then confirm and adjust your settings.
- Pressing the fire button five times quickly will lock the Plato. To unlock it press the fire button five times again quickly.
- When the Plato is locked pressing the fire button for three seconds will turn the Plato off and the display will read "SYSTEM OFF". To turn it back on press the fire button five times quickly.
- Pressing the fire button three times quickly will put the Plato into stealth mode. While in stealth mode the Plato may still fire but the wattage or temperature settings cannot be adjusted.
- Pressing both adjustment buttons simultaneously will return you to the Plato's home screen.
- While the device is active the display will indicate the battery level, coil resistance, output voltage, and the output wattage.
- The Plato has two wattage mode settings, Regulated and Bypass. If "Regulated" is selected the Plato will read the atomizer's resistance automatically and you can adjust your wattage from 1 watt to 50 watts via the two buttons. Holding the button longer will increase the scroll speed. If "Bypass" is selected the Plato will read the atomizer's resistance automatically, you will not be able to adjust the wattage, the Plato will discharge directly from the battery without the cpu regulating it.

Instructions

- The Plato supports Nickel (Ni200) and Titanium (Ti) in temperature control mode. You may choose between Fahrenheit and Celsius after selecting the atomizer's material. The Plato will then ask if the atomizer is at room temperature, if so select yes. (Resistance lock) If no is selected the Plato will use the previous settings. Temperature is adjust in the same manner as wattage in wattage mode. Holding either button longer will increase the scroll speed.

Language Selection

- Pressing the fire button while installing the battery will bring up the firmware version along with the Aspire logo. (As of the time of this writing the current firmware is version 01.) You may then select your language preference, English or Chinese. If you merely see the Aspire logo without the firmware version indication remove the battery and try again.

Firmware Update

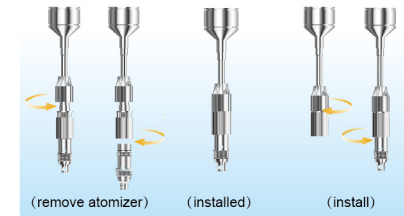
- The Plato features firmware updates through usb. Users may change the interface layout, the logo, the ramp up wattage, as well as future software upgrades and feature releases.
- Users will find updates for download for their Plato at <http://www.aspirecig.com/upgrade/>

Steps

- Download the driver software from the website.
- Run the software.
- Connect the Plato to your computer.
- Install your 18650 battery.
- Choose the update file and click update.
- If it failed during the update process please repeat step 2 to step 5.

Notice

- The atomizer cannot be checked while the device is in "sleep" mode. Please make sure to "wake" the device before attaching an atomizer.
- Remove the drip tip, then unscrew the top of the tank system with either the provided key or a coin. First unscrew the cartridge's arrestor and then remove the old atomizer. Next tighten the arrestor but don't over tighten it then install your new atomizer and rescrew the tank system into the Plato. Now screw on the top of the tank system and replace your drip tip.



WARNING



When using a new atomizer, let the tank stand for 3~5 minutes, so the cotton can be saturated with juice before firing.
Do not let the tank become completely empty. Refill the tank to avoid dry burning or damage to the atomizer.

There are several color options available



To learn more about your products and how to use, please visit: www.aspirecig.com

Designed and Manufactured By Eigate in China
Copyright © 2016 Aspire. All Rights Reserved.

