



User Manual For Premium Kit



Welcome to Aspire ... a change you can taste!

Thank you for purchasing Aspire new high-end vaping Kit. We hope you have many hours of enjoyment. Before using the kit, please read through the manual for proper care and use. This will help you to achieve the best performance from your new product. Please keep this manual for future reference.

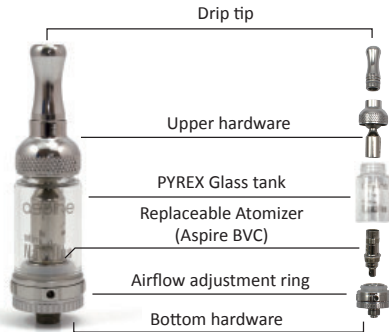
Standard configuration

Aspire Premium Kit contains:

- * 1 Aspire CF VV+ 1000mah battery
- * 1 Aspire Nautilus Mini
- * 5 Replacement 1.8 Ω BVC atomizers
- * 1 USB charger
- * 1 A/C adaptor
- * 1 User manual



Aspire Nautilus Mini



Filling the Nautilus Mini

1. Check to make sure the upper stainless steel be screwed tightly onto the glass tank.



2. Screw the bottom hardware off the upper hardware.



Filling the Nautilus Mini



When you unscrew the bottom hardware, the atomizer should be unscrewed from the upper hardware at the same time. In some cases, the atomizer will remain attached to the air-tube shaft in the center. If this happens, please unscrew the atomizer from the upper hardware and screw it back into the bottom hardware.

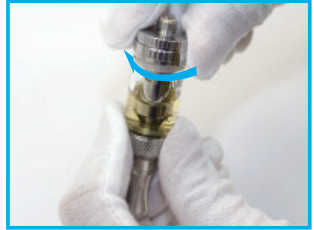
Filling the Nautilus Mini



3. Fill liquid into the space between the glass tank and the center metal tube.



4. To ensure a smooth connection between the bottom hardware and the glass tank, please place a drop of e-liquid along the sealing silicone.



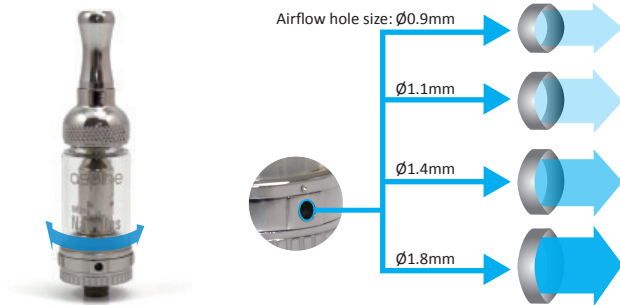
5. Screw the bottom hardware back onto the upper hardware.

Filling the Nautilus Mini



- Note: 1. Do not over-fill or get liquid into the small center hole.
2. For best performance and long clearomizer life, please allow the e-liquid to soak for 2 minutes before use.
3. Do not remove any parts, make sure all components are in place.*

How to adjust the airflow



The Nautilus Mini unique four-port airflow valve features 4 different sizes to control the airflow of your tank. Rotate the Airflow control valve to your desired port size.

Operating Your Premium Kit

1. Fill the Nautilus Mini with e-liquid.

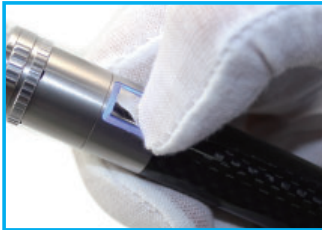


2. Screw the Nautilus Mini into CF VV+ battery.



Operating Your Premium Kit

3. Push the button on the battery (press 5 times in succession to turn ON/OFF), the LED will blink 3 times and the button will illuminate Blue when active and ON. Press the LED button and inhale at the same time. Release the button after inhaling. The light indicates it is working.



4. Rotate the rotary knob at the bottom of the battery to deliver the optimal voltage for vaping needs.



Charging the battery

The battery needs to be recharged when the unit produces a decreased vapor and/or the battery Orange indicator light blinks 15 times.



To charge the battery: Unscrew the battery from the vaping components and gently screw battery into the dedicated USB charger provided in the kit. Plug the USB into the supplied A/C adaptor or computer. The battery will flash 3 times and then turn solid in color (Orange light in 3.2-3.5V, Blue light in 3.5-4.15V). The light on the USB charger will be red when charging. It takes approximately 3 hours for the battery to charge. Once fully charged, the USB charger will display a green light, and the LED light on battery will turn off.

Cautions

1. When cleaning the clearomizer, please be sure to remove the coil first, thoroughly wash out any excess e-liquid and let it dry out before reassembly.
2. The device should not be impacted, dropped or mishandled, otherwise it may cause damage and injure.
3. You should only use the dedicated USB charger provided in the kit to avoid damaging battery.
4. Please keep connectors clean. A dirty battery connection will result in poor function and charging.
5. Please charge the battery fully before using to maintain a good battery life.
6. Please always keep the battery dry and away from moisture.
7. Do not over tighten the battery while screwing it onto the charger, a gentle connection is all it needs to function.
8. Do not store battery in too hot or too cold environment.
9. Do not attempt to open or modify the device in any way as damage or personal injury may occur.
10. If you have a problem with the device, please contact the seller - do not try to repair it or dismantle it by yourself. This could damage the device and endanger yourself and will invalidate the warranty.