

Magoo User Manual

Notice for Use

Thank for choosing iSmoka products! Please read this manual carefully before use to ensure that your usage is correct. If you require additional information or have questions about the product or its use, please consult your local iSmoka agent, or visit our website at www.ismoka.com.

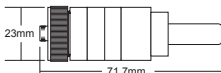
Product Introduction

With all the parts detachable, Magoo has been added more flexible features, whose liquid volume and air inflow are adjustable. Seeing from the individual window of liquid level, the liquid volume is more intuitive. What's more, customers can choose pluggable mouthpieces according to their own favors. From this product, people can also enjoy the fun of DIY, as customers can replace the heating coil (single and dual) and entire atomizer head by themselves. In addition, the scalable positive pole contact can better adapt and protect the battery contacts.

Product Parameter

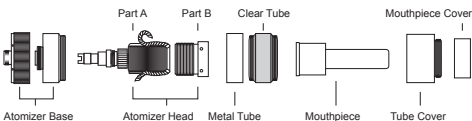
Length: 71.7mm

Diameter: 23mm



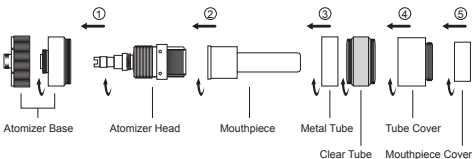
Components

- 1* Mouthpiece Cover
- 1* Tube Cover
- 1* Mouthpiece
- 1* Metal Tube
- 1* Clear Tube
- 1* Atomizer Head (Part A, Part B)
- 1* Atomizer Base



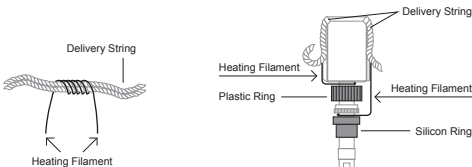
How to assemble

Firstly, screw the atomizer head onto the atomizer base; secondly, screw the mouthpiece to the atomizer head; thirdly, screw on the atomizer tube, then the tube cover; at last, the mouthpiece cover.

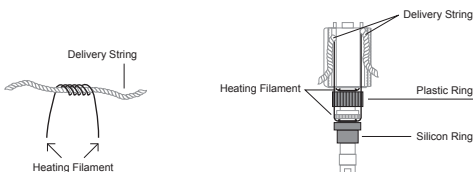


How to replace the heating coil

Single heating coil: first, wrap the heating coil on the middle of the delivery string for several laps with both ends left enough length to reach the bottom of the atomizer head A. Then wrap the ends on the atomizer head part A, separately nipped by the plastic ring and the silicon ring, which are the positive and negative conversion. Finally, put the delivery string into the matching slots and screw the atomizer part B on.

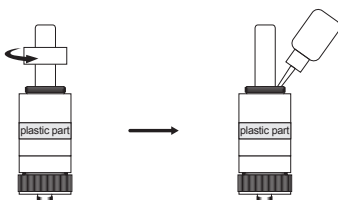


Dual heating coil: the detail of each coil is just the same as the single one. The only difference is that the dual one has two crisscrossed slots, so you should match them with two delivery rings.



How to add liquid

Unscrew the mouthpiece cover and refill the liquid from the inwall of the tube cover. You can see the liquid level from the plastic part of the atomize tube. Please do not fill it completely full.



Functions

1. Since there is an air inlet in the atomizer base, by screwing the thread ring on the atomizer base, the size of the inlet could be adjusted so as to control the air inflow.
2. When the mouthpiece was screwed, the fluid volume that flows into the atomizer head could be controlled, which determines the vapor volume.
3. The heating coil and the entire atomizer head could be replaced by DIY.

Precautions

1. Only have your Magoo repaired by iSmoka. Do not attempt to repair the unit by yourself as damage or personal injury may occur.
2. Please don't put the Magoo under high temperature or damp conditions, or it might be damaged. The appropriate operation temperature is within 0℃ to 45℃ while charging and -10℃ to 60℃ while using.
3. Do not cast it or place it with anything sharp;
4. Do not detach it or lay it flat on the table when it is not in use, as it may cause leakage;
5. Do not assemble it with products of other brands, if it is damaged or is unable to use by this reason, iSmoka will not take any responsibility.

Warranty

Please consult with iSmoka distributors for their warranty and return policy. We are not responsible for any defects caused by human error. Our warranty is not available for products purchased from third party vendors.

Email: info@ismoka.com
Web: www.eleafworld.com



MADE IN CHINA
Manufactured by iSmoka