

iTaste 134 MX-Z说明书 尺寸: 56*96mm 封面材质: 黑色特种纸 (反面白色) 烫银 内页材质: 128g双铜板纸 颜色: 四色印刷 装订方式: 胶装

CE FCC



itaste 134 MX-Z

USER MANUAL

**Congratulations on your purchase the first original Innokin Mechanical Mod:
The Innokin Technology iTaste 134 MX-Z ' ZODIAC'.**

Zodiac Sign	Symbol	Birthdate
Capricorn	♑	21 December - 20 January
Aquarius	♒	20 January - 18 February
Pisces	♓	18 February - 20 March
Aries	♈	20 March - 19 April
Taurus	♉	19 April - 20 May
Gemini	♊	20 May - 21 June
Cancer	♋	21 June - 22 July
Leo	♌	22 July - 23 August
Virgo	♍	23 August - 22 September
Libra	♎	22 September - 23 October
Scorpio	♏	23 October - 22 November
Sagittarius	♐	22 November - 21 December

First of all, please ensure that your iTaste 134 MX-Z is a Real Innokin Technology product. To verify that this iTaste 134 MX-Z is a real Innokin Technology device please:

- 1). Locate and Scratch to reveal your iTaste 134 MX-Z Unique Authorization number which is included on a label on the reverse of the packaging.
- 2). Visit the Official Innokin Technology website at <http://www.Innokin.com>.
- 3). Enter the Unique Authentication number in the Authentication field.
- 4). Verify your iTaste 134 MX-Z is a Real Innokin Technology Device.

If you have any questions or suggestions we would like to invite you to please write to us at Support@innokin.com.

We are looking forward to hearing from you. Also for the latest information and to win great prizes please join our Innokin FaceBook Page @ www.facebook.com/Innokin.Technology.

WARNING:

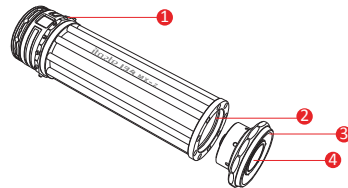
Please read this section carefully to ensure you receive maximum benefits from your iTaste 134 MX-Z and enjoy vaping with it in the most safe and effective ways possible.

1. This Advanced Personal Vaporizer may be used with e-liquids that contain nicotine. **Please check with your e-liquid provider.** This product is only intended for use by adults of legal smoking age (18+) and should not be used by children, women who are pregnant or breastfeeding, or persons with or at risk of heart disease, high blood pressure, diabetes or taking medicine for depression or asthma, or who otherwise may be sensitive to nicotine. Nicotine is addictive and habit forming, and it is very toxic by inhalation, in contact with the skin or eyes, or if swallowed. Ingestion of the non-vaporized concentrated e-liquid ingredients can be poisonous. Keep away from children and pets.
2. This Advanced Personal Vaporizer may be used with e-liquids that contain nicotine, a chemical known to the State of California to cause birth defects or other reproductive harm. **Please check with your e-liquid provider. (For products sold in California.)**

3. This Advanced Personal Vaporizer is only designed to be used with high quality e-liquid. **Please check with your e-liquid provider.** This device is not intended for use with loose tobacco leaf or herbal substances.
4. This Advanced Personal Vaporizer has not been evaluated by the Food and Drug Administration and is not intended to treat, mitigate, prevent or cure any disease or condition. This product is not intended for use as a smoking cessation device.
5. Innokin Technology is not responsible for battery and charger explosions, or malfunctions, due to the use of low-quality batteries or chargers. The iTaste 134 MX-Z does not come included with batteries or a charger.
We recommend using high quality IMR high-drain 18650 batteries (Length: 64.40—66.20, 3.7V Unprotected),
The iTaste 134 MX-Z cannot use 2 stacked batteries.
Using any other types of batteries may damage your iTaste 134 MX-Z.
6. Innokin Technology is not responsible for atomizer explosions, or malfunctions, due to the use of a low-quality or re-built atomizer. The iTaste 134 MX-Z does not come included with an atomizer.

7. This Advanced Personal Vaporizer includes small parts. Always keep any small parts out of reach of children and pets to prevent swallowing or other harm.
8. Obey local laws or regulations regarding Electronic Cigarettes when vaping. If you are in an area where there are any bans or potential dangers, please do not use your Advanced Personal Vaporizer.
9. Do not misuse, mishandle or store your Advanced Personal Vaporizer improperly. Even though it is made of high quality stainless steel it may become damaged when dropped or otherwise mishandled.
10. Do not drop, throw, or mishandle your Advanced Personal Vaporizer as the outer shell or inner components may become damaged. If the shell of the device becomes damaged or the structural integrity of the battery becomes compromised, discontinue use immediately and contact your Authorized Innokin Technology Vendor.
11. In order to prolong the operation of your Advanced Personal Vaporizer, please do not place or store in excessively hot or cold environments.

12. Your Advanced Personal Vaporizer is not waterproof. Keep it dry at all times. Do not submerge this device or expose it to moisture.
13. Keep your Advanced Personal Vaporizer away from sources of excessive heat or cold as damage may occur.
14. Do not attempt to repair the unit by yourself as damage or personal injury may occur.
15. If the device becomes excessively hot, discontinue use immediately and contact your Authorized Innokin Technology Vendor.
16. If the device will not power off, discontinue use immediately and contact your Authorized Innokin Technology Vendor.
17. If the device functions in a way which is not stated in the manual contact your Authorized Innokin Technology Vendor.



1. Zodiac Selection Rotational Wheel
2. Battery Housing
3. Battery Bottom Cap
4. Firing Button

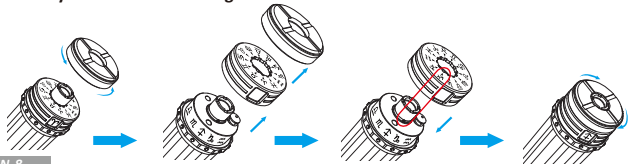
OPERATION GUIDE:

The iTaste 134 MX-Z has a unique safety feature which gives you the power to choose the Zodiac sign of your choice which when selected will allow your iTaste 134 MX-Z to fire.

Please note:

For your own safety please set your chosen Zodiac Sign before you activate iTaste 134 MX-Z. Innokin Technology is not responsible for any damage or injury if the Zodiac sign has not been selected. If a Zodiac sign has not been selected then any Zodiac sign in the rotational wheel will activate the device when the bottom firing button is pressed. Again we strongly recommend that you set your desired Zodiac sign before you activate the device.

To set your desired Zodiac sign:



Step 1:

Place the iTaste 134 MX-Z on a flat surface. Carefully unscrew the iTaste 134 MX-Z 1st top ring. This will expose the top of the 2nd ring. The 2nd ring has the 12 Zodiac Symbols printed on top with arrows pointing toward the inner pin.

Step 2:

Very carefully lift the 2nd ring up from the center pin. This will expose a black ring with Zodiac signs around the outside and a golden spring with two ball bearings on top. Do not lose these pieces.

Please carefully note the center pin. On the top of the center pin there are four grooves. At the base of one of the grooves you will see a very small ball/metal bump. This is the selection point. There is only 1 selection point, the base of the other 3 grooves do not have a selection point.

Choose your selected Zodiac Symbol on the 2nd ring. Take the 2nd ring and place it back over the center pin. Line your selected Zodiac sign and arrow to point at the selection point at the base of the center pin.

Step3:

Push the 2nd ring down very firmly and hold it. You will be able to see the arrow pointing to the selection point. Hold the 2nd ring down firmly and screw the 1st top ring back onto the center post while holding the 2nd ring down and in place. Ensure that the 1st ring is right side up. Firmly tighten the 1st top ring until it is firmly in place.

Vaping:

When the black rotational ring on the iTaste 134 MX-Z Advanced Personal Vaporizer has been turned to the selected Zodiac sign the button may be pressed to activate the iTaste 134 MX-Z. If the selected Zodiac sign is not shown in the Zodiac square then the unit will not fire. Turn the black rotational ring to the selected Zodiac sign in order to activate the iTaste 134 MX-Z.

To lock iTaste 134 MX-Z simply choose one of the other 11 Zodiac signs.

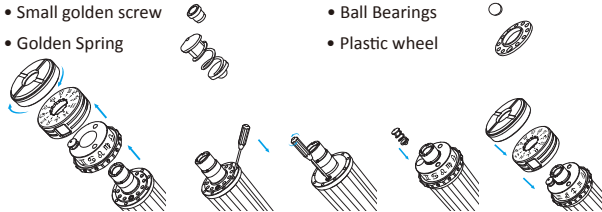
Replaceable Components.

The iTaste 134 MX-Z is a mechanical mod that has adjustable components which

will become worn after a period of use. After some time internal components (the golden spring and plastic wheel) may become damaged due to abrasion which may cause a loss of connection. Internal components may need to be replaced with components included in the iTaste 134 MX-Z package, or purchased from an Authorized Innokin vendor.

The iTaste 134 MX-Z Replaceable Components are:

- Small golden screw
- Golden Spring
- Ball Bearings
- Plastic wheel



Step 1:

Place the iTaste 134 MX-Z on a flat surface. Carefully unscrew the iTaste 134 MX-Z 1st top ring. This will expose the top of the 2nd ring. The 2nd silver ring has the 12 Zodiac Symbols printed on top with arrows pointing toward the inner pin.

Step 2:

Very carefully lift the 2nd silver ring up from the center pin. This will expose a 3rd black ring with Zodiac signs around the outside and a golden spring with two ball bearings on top. Do not lose these pieces.

Very carefully lift the black internal ring. The ball bearings can easily jump out, roll away and disappear so please do this carefully. There is a white plastic ring with a small golden screw. If necessary use the provided screw driver to lift the white plastic ring and unscrew the small golden screw. Replace the small golden screw and the white plastic ring. Carefully place the 3rd Black ring on top.

Step 3:

If necessary replace the Golden Spring with the new replacement Golden Spring.

Carefully dispose of the old Golden Spring.

Choose your selected Zodiac Symbol. Take the 2nd ring and place it back over the center pin. Line your selected Zodiac sign and arrow to point at the selection point at the base of the center pin.

Step 4:

Push the 2nd ring down very firmly and hold it. You will be able to see the arrow pointing to the selection point. Hold the 2nd ring down firmly and screw the 1st top ring back onto the center post while holding the 2nd ring down and in place.

Firmly tighten the 1st top ring until it is firmly in place.

Technical Specifications:

Battery: The iTaste 134 MX-Z uses IMR high-drain unprotected 18650 batteries.

Battery Length: 64.40—66.20, 3.7V.

The iTaste 134 MX-Z cannot use 2 stacked batteries.

Output Voltage is directly correlated to Battery voltage.

Positive connector Pin: Using new advanced Spring Technology iTaste 134 MX-Z is compatible with 510's connector pins of varying heights.

Unique Zodiac Firing System: Select one of 12 Zodiac signs as your chosen sign. When your chosen Zodiac sign is selected the unit will fire. To lock the iTaste 134 MX-Z simply choose one of the other Zodiac signs.

WARRANTY INFORMATION:

Innokin Technology provides a three month after sales service warranty to all of our authorized vendors. Please consult your Authorized Innokin Technology Vendor for more information and terms of service. Innokin's warranty does not apply to products purchased through third-party vendors. To ensure you buy real Innokin Technology products, and take advantage of our after sales service warranty, only buy from Authorized Innokin Technology Vendors.